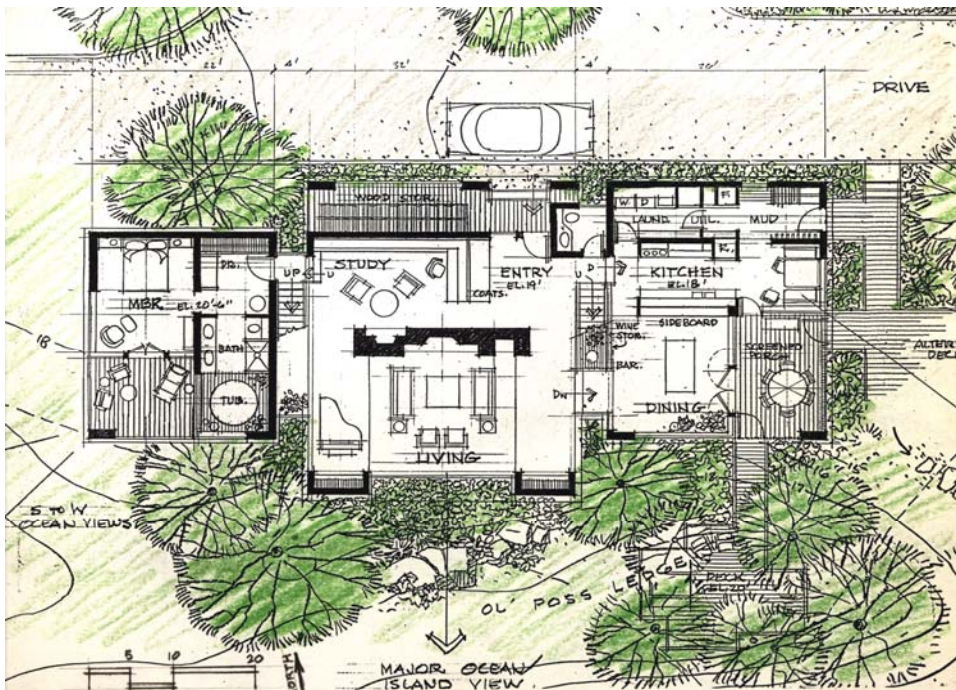




This year-round home on the Coast of Maine fits comfortably into the landscape of farmhouses and summer cottages. From any distance, and from off-shore, the series of gable roofs with their white cedar shingles complement the familiar landscape. The neighbors like it.

Closer examination reveals a surprisingly modern house. The gable forms are separated by clear glass skylights that also light open stairways at each end of a spacious living room/gallery. Laminated wood beams span clear openings to reveal porches, gardens, and the broad expanse of Penobscot Bay. Contrasting with the solidity of the laminated beams and the shingled walls are glass corners that merge indoor and outdoor spaces and bring generous sun into the south facing rooms



## **PRIVATE RESIDENCE**

DEER ISLE, MAINE

THE BURLEY PARTNERSHIP, ARCHITECTS

The house gable parallels the shore. Another tier of gable forms accommodates garage, boat storage, and a craft studio. Between the two tiers is an entry courtyard. At each end of the courtyard are small formal gardens. Immediately beyond the gardens and the drip-edge of the house is the natural landscape: an abundance of ferns, spruce, birch...and a gentle granite shore.



The gable forms are separated by clear glass skylights that also light open stairways at each end of a spacious living room/gallery. Laminated wood beams span clear openings to reveal porches, gardens, and the broad expanse of Penobscot Bay.



## **PRIVATE RESIDENCE**

DEER ISLE, MAINE

THE BURLEY PARTNERSHIP, ARCHITECTS